

LANA ZAICHENKO



HEIGHT 174 CM / 5'8.5" | CHEST 87 CM / 34.5" | WAIST 62 / 24 | HIPS 89 CM / 35" | HAIR BROWN | EYES BLUE
DRESS 36 EU / 6 US / 8 UK | SHOES 38 EU / 7 US / 5 UK

wiener
models
A KULT AGENCY

LANA ZAICHENKO



HEIGHT 174 CM / 5'8.5" | CHEST 87 CM / 34.5" | WAIST 62 / 24 | HIPS 89 CM / 35" | HAIR BROWN | EYES BLUE
DRESS 36 EU / 6 US / 8 UK | SHOES 38 EU / 7 US / 5 UK

wiener
models
A KULT AGENCY

LANA ZAICHENKO



HEIGHT 174 CM / 5'8.5" | CHEST 87 CM / 34.5" | WAIST 62 / 24 | HIPS 89 CM / 35" | HAIR BROWN | EYES BLUE
DRESS 36 EU / 6 US / 8 UK | SHOES 38 EU / 7 US / 5 UK

wiener
models
A KULT AGENCY

LANA ZAICHENKO



HEIGHT 174 CM / 5'8.5" | CHEST 87 CM / 34.5" | WAIST 62 / 24 | HIPS 89 CM / 35" | HAIR BROWN | EYES BLUE
DRESS 36 EU / 6 US / 8 UK | SHOES 38 EU / 7 US / 5 UK

wiener
models
A KULT AGENCY

LANA ZAICHENKO



HEIGHT 174 CM / 5'8.5" | CHEST 87 CM / 34.5" | WAIST 62 / 24 | HIPS 89 CM / 35" | HAIR BROWN | EYES BLUE
DRESS 36 EU / 6 US / 8 UK | SHOES 38 EU / 7 US / 5 UK

wiener
models
A KULT AGENCY

LANA ZAICHENKO



HEIGHT 174 CM / 5'8.5" | CHEST 87 CM / 34.5" | WAIST 62 / 24 | HIPS 89 CM / 35" | HAIR BROWN | EYES BLUE
DRESS 36 EU / 6 US / 8 UK | SHOES 38 EU / 7 US / 5 UK

wiener
models
A KULT AGENCY

LANA ZAICHENKO



HEIGHT 174 CM / 5'8.5" | CHEST 87 CM / 34.5" | WAIST 62 / 24 | HIPS 89 CM / 35" | HAIR BROWN | EYES BLUE
DRESS 36 EU / 6 US / 8 UK | SHOES 38 EU / 7 US / 5 UK

wiener
models
A KULT AGENCY

LANA ZAICHENKO



HEIGHT 174 CM / 5'8.5" | CHEST 87 CM / 34.5" | WAIST 62 / 24 | HIPS 89 CM / 35" | HAIR BROWN | EYES BLUE
DRESS 36 EU / 6 US / 8 UK | SHOES 38 EU / 7 US / 5 UK

wiener
models
A KULT AGENCY

LANA ZAICHENKO



HEIGHT 174 CM / 5'8.5" | CHEST 87 CM / 34.5" | WAIST 62 / 24 | HIPS 89 CM / 35" | HAIR BROWN | EYES BLUE
DRESS 36 EU / 6 US / 8 UK | SHOES 38 EU / 7 US / 5 UK

wiener
models
A KULT AGENCY

LANA ZAICHENKO



HEIGHT 174 CM / 5'8.5" | CHEST 87 CM / 34.5" | WAIST 62 / 24 | HIPS 89 CM / 35" | HAIR BROWN | EYES BLUE
DRESS 36 EU / 6 US / 8 UK | SHOES 38 EU / 7 US / 5 UK

LANA ZAICHENKO



HEIGHT 174 CM / 5'8.5" | CHEST 87 CM / 34.5" | WAIST 62 / 24 | HIPS 89 CM / 35" | HAIR BROWN | EYES BLUE
DRESS 36 EU / 6 US / 8 UK | SHOES 38 EU / 7 US / 5 UK

wiener
models
A KULT AGENCY

LANA ZAICHENKO



HEIGHT 174 CM / 5'8.5" | CHEST 87 CM / 34.5" | WAIST 62 / 24 | HIPS 89 CM / 35" | HAIR BROWN | EYES BLUE
DRESS 36 EU / 6 US / 8 UK | SHOES 38 EU / 7 US / 5 UK

wiener
models
A KULT AGENCY

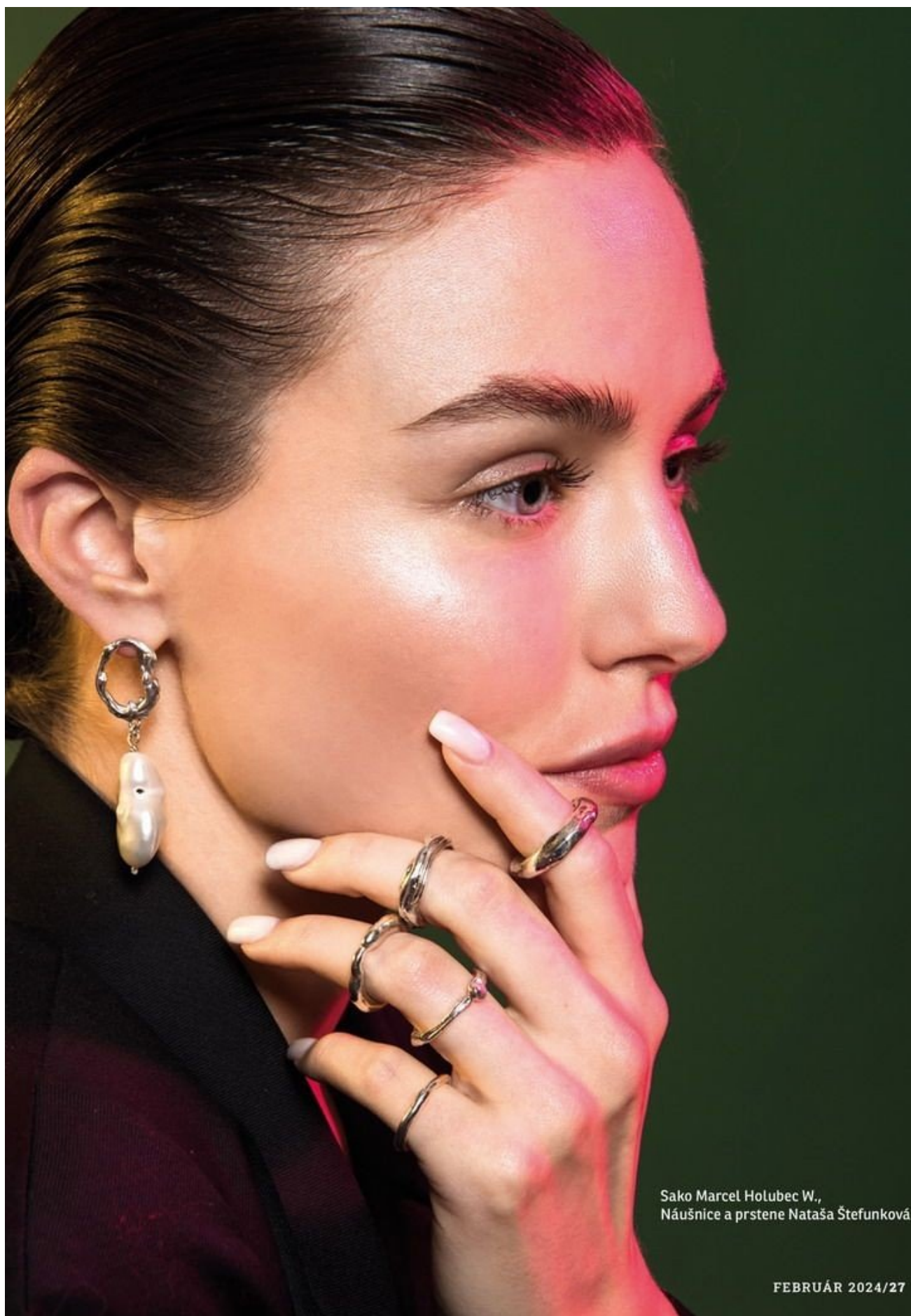
LANA ZAICHENKO



HEIGHT 174 CM / 5'8.5" | CHEST 87 CM / 34.5" | WAIST 62 / 24 | HIPS 89 CM / 35" | HAIR BROWN | EYES BLUE
DRESS 36 EU / 6 US / 8 UK | SHOES 38 EU / 7 US / 5 UK

wiener
models
A KULT AGENCY

LANA ZAICHENKO



Sako Marcel Holubec W.,
Náušnice a prstene Nataša Štefunková

FEBRUÁR 2024/27

HEIGHT 174 CM / 5'8.5" | CHEST 87 CM / 34.5" | WAIST 62 / 24 | HIPS 89 CM / 35" | HAIR BROWN | EYES BLUE
DRESS 36 EU/6 US/8 UK | SHOES 38 EU/7 US/5 UK

wiener
models
A KULT AGENCY

LANA ZAICHENKO



HEIGHT 174 CM / 5'8.5" | CHEST 87 CM / 34.5" | WAIST 62 / 24 | HIPS 89 CM / 35" | HAIR BROWN | EYES BLUE
DRESS 36 EU / 6 US / 8 UK | SHOES 38 EU / 7 US / 5 UK

wiener
models
A KULT AGENCY

LANA ZAICHENKO



HEIGHT 174 CM / 5'8.5" | CHEST 87 CM / 34.5" | WAIST 62 / 24 | HIPS 89 CM / 35" | HAIR BROWN | EYES BLUE
DRESS 36 EU / 6 US / 8 UK | SHOES 38 EU / 7 US / 5 UK

wiener
models
A KULT AGENCY

LANA ZAICHENKO



HEIGHT 174 CM / 5'8.5" | CHEST 87 CM / 34.5" | WAIST 62 / 24 | HIPS 89 CM / 35" | HAIR BROWN | EYES BLUE
DRESS 36 EU / 6 US / 8 UK | SHOES 38 EU / 7 US / 5 UK

wiener
models
A KULT AGENCY

LANA ZAICHENKO



HEIGHT 174 CM / 5'8.5" | CHEST 87 CM / 34.5" | WAIST 62 / 24 | HIPS 89 CM / 35" | HAIR BROWN | EYES BLUE
DRESS 36 EU / 6 US / 8 UK | SHOES 38 EU / 7 US / 5 UK

wiener
models
A KULT AGENCY

LANA ZAICHENKO



HEIGHT 174 CM / 5'8.5" | CHEST 87 CM / 34.5" | WAIST 62 / 24 | HIPS 89 CM / 35" | HAIR BROWN | EYES BLUE
DRESS 36 EU / 6 US / 8 UK | SHOES 38 EU / 7 US / 5 UK

wiener
models
A KULT AGENCY

LANA ZAICHENKO



HEIGHT 174 CM / 5'8.5" | CHEST 87 CM / 34.5" | WAIST 62 / 24 | HIPS 89 CM / 35" | HAIR BROWN | EYES BLUE
DRESS 36 EU / 6 US / 8 UK | SHOES 38 EU / 7 US / 5 UK

wiener
models
A KULT AGENCY

LANA ZAICHENKO



HEIGHT 174 CM / 5'8.5" | CHEST 87 CM / 34.5" | WAIST 62 / 24 | HIPS 89 CM / 35" | HAIR BROWN | EYES BLUE
DRESS 36 EU / 6 US / 8 UK | SHOES 38 EU / 7 US / 5 UK

wiener
models
A KULT AGENCY

LANA ZAICHENKO



EMMA *Krása*

dračice Oči

Očné linky dokážu zázraky. Pri extravagancii to platí dvojnásobne, preto sa nebojte výrazných sýtočiernych liniek!

Náušnice, H&M
Trenčkot, PINKO

Foto Jena ŠIMKOVÁ

Vizáž a vlasy Tomáš VIDA/DERMACOL

Styling a text Samuel KRAJČA

Modelka Lana Z./EXIT MODEL
MANAGEMENT

02 / Október 2014 EMMA

HEIGHT 174 CM / 5'8.5" | CHEST 87 CM / 34.5" | WAIST 62 / 24 | HIPS 89 CM / 35" | HAIR BROWN | EYES BLUE
DRESS 36 EU / 6 US / 8 UK | SHOES 38 EU / 7 US / 5 UK

wiener
models
A KULT AGENCY

LANA ZAICHENKO



HEIGHT 174 CM / 5'8.5" | CHEST 87 CM / 34.5" | WAIST 62 / 24 | HIPS 89 CM / 35" | HAIR BROWN | EYES BLUE
DRESS 36 EU / 6 US / 8 UK | SHOES 38 EU / 7 US / 5 UK

wiener
models
A KULT AGENCY

LANA ZAICHENKO



v očiach Tajuplnosť

Sivá je farba tejto sezóny. Neohraničený očný tieň v spojení s tajomným pohľadom bude vašou tajnou zbraňou hromadného ničenia.

Prstene, BIJOU BRIGITTE
Sveter, LUCIA YILDIZ

October 2023 / 93

HEIGHT 174 CM / 5'8.5" | CHEST 87 CM / 34.5" | WAIST 62 / 24 | HIPS 89 CM / 35" | HAIR BROWN | EYES BLUE
DRESS 36 EU / 6 US / 8 UK | SHOES 38 EU / 7 US / 5 UK

wiener
models
A KULT AGENCY

LANA ZAICHENKO



HEIGHT 174 CM / 5'8.5" | CHEST 87 CM / 34.5" | WAIST 62 / 24 | HIPS 89 CM / 35" | HAIR BROWN | EYES BLUE
DRESS 36 EU / 6 US / 8 UK | SHOES 38 EU / 7 US / 5 UK

wiener
models
A KULT AGENCY

LANA ZAICHENKO



HEIGHT 174 CM / 5'8.5" | CHEST 87 CM / 34.5" | WAIST 62 / 24 | HIPS 89 CM / 35" | HAIR BROWN | EYES BLUE
DRESS 36 EU/6 US/8 UK | SHOES 38 EU/7 US/5 UK

wiener
models
A KULT AGENCY

LANA ZAICHENKO



HEIGHT 174 CM / 5'8.5" | CHEST 87 CM / 34.5" | WAIST 62 / 24 | HIPS 89 CM / 35" | HAIR BROWN | EYES BLUE
DRESS 36 EU / 6 US / 8 UK | SHOES 38 EU / 7 US / 5 UK

wiener
models
A KULT AGENCY

LANA ZAICHENKO



HEIGHT 174 CM / 5'8.5" | CHEST 87 CM / 34.5" | WAIST 62 / 24 | HIPS 89 CM / 35" | HAIR BROWN | EYES BLUE
DRESS 36 EU / 6 US / 8 UK | SHOES 38 EU / 7 US / 5 UK

wiener
models
A KULT AGENCY

LANA ZAICHENKO



HEIGHT 174 CM / 5'8.5" | CHEST 87 CM / 34.5" | WAIST 62 / 24 | HIPS 89 CM / 35" | HAIR BROWN | EYES BLUE
DRESS 36 EU / 6 US / 8 UK | SHOES 38 EU / 7 US / 5 UK

LANA ZAICHENKO

FOLLOWme

#Herbst2023

TREND GUIDE



WANTED!
Die schönsten
Beauty-Trends
für Herbst und
Winter.

**AB IN DIE
WANNE**

Badespaß für
jede Vorliebe &
jedes Budget

**LÄUFT
GLATT**

Diese Frisuren
peppen glatte
Haare auf

So wird's ein
**COSY
HERBST**

BIPA



HEIGHT 174 CM / 5'8.5" | CHEST 87 CM / 34.5" | WAIST 62 / 24 | HIPS 89 CM / 35" | HAIR BROWN | EYES BLUE

DRESS 36 EU / 6 US / 8 UK | SHOES 38 EU / 7 US / 5 UK

wiener
models
A KULT AGENCY

LANA ZAICHENKO



HEIGHT 174 CM / 5'8.5" | CHEST 87 CM / 34.5" | WAIST 62 / 24 | HIPS 89 CM / 35" | HAIR BROWN | EYES BLUE
DRESS 36 EU / 6 US / 8 UK | SHOES 38 EU / 7 US / 5 UK

wiener
models
A KULT AGENCY

LANA ZAICHENKO



HEIGHT 174 CM / 5'8.5" | CHEST 87 CM / 34.5" | WAIST 62 / 24 | HIPS 89 CM / 35" | HAIR BROWN | EYES BLUE
DRESS 36 EU / 6 US / 8 UK | SHOES 38 EU / 7 US / 5 UK

wiener
models
A KULT AGENCY

LANA ZAICHENKO



HEIGHT 174 CM / 5'8.5" | CHEST 87 CM / 34.5" | WAIST 62 / 24 | HIPS 89 CM / 35" | HAIR BROWN | EYES BLUE
DRESS 36 EU / 6 US / 8 UK | SHOES 38 EU / 7 US / 5 UK

wiener
models
A KULT AGENCY

LANA ZAICHENKO



HEIGHT 174 CM / 5'8.5" | CHEST 87 CM / 34.5" | WAIST 62 / 24 | HIPS 89 CM / 35" | HAIR BROWN | EYES BLUE
DRESS 36 EU / 6 US / 8 UK | SHOES 38 EU / 7 US / 5 UK

wiener
models
A KULT AGENCY

LANA ZAICHENKO



HEIGHT 174 CM / 5'8.5" | CHEST 87 CM / 34.5" | WAIST 62 / 24 | HIPS 89 CM / 35" | HAIR BROWN | EYES BLUE
DRESS 36 EU/6 US/8 UK | SHOES 38 EU/7 US/5 UK

wiener
models
A KULT AGENCY

LANA ZAICHENKO

Šaty a čelenka,
Veronika Kostková
Náušnice,
27 JEWELRY
Sandále, **Asos**



43

HEIGHT 174 CM / 5'8.5" | CHEST 87 CM / 34.5" | WAIST 62 / 24 | HIPS 89 CM / 35" | HAIR BROWN | EYES BLUE
DRESS 36 EU / 6 US / 8 UK | SHOES 38 EU / 7 US / 5 UK

wiener
models
A KULT AGENCY

LANA ZAICHENKO



HEIGHT 174 CM / 5'8.5" | CHEST 87 CM / 34.5" | WAIST 62 / 24 | HIPS 89 CM / 35" | HAIR BROWN | EYES BLUE
DRESS 36 EU / 6 US / 8 UK | SHOES 38 EU / 7 US / 5 UK

wiener
models
A KULT AGENCY

LANA ZAICHENKO



Sako Marcel Holubec W.,
Náušnice a prstene Nataša Štefunková

FEBRUÁR 2024/27

HEIGHT 174 CM / 5'8.5" | CHEST 87 CM / 34.5" | WAIST 62 / 24 | HIPS 89 CM / 35" | HAIR BROWN | EYES BLUE
DRESS 36 EU/6 US/8 UK | SHOES 38 EU/7 US/5 UK

wiener
models
A KULT AGENCY

LANA ZAICHENKO



HEIGHT 174 CM / 5'8.5" | CHEST 87 CM / 34.5" | WAIST 62 / 24 | HIPS 89 CM / 35" | HAIR BROWN | EYES BLUE
DRESS 36 EU / 6 US / 8 UK | SHOES 38 EU / 7 US / 5 UK

wiener
models
A KULT AGENCY

LANA ZAICHENKO



HEIGHT 174 CM / 5'8.5" | CHEST 87 CM / 34.5" | WAIST 62 / 24 | HIPS 89 CM / 35" | HAIR BROWN | EYES BLUE
DRESS 36 EU / 6 US / 8 UK | SHOES 38 EU / 7 US / 5 UK

wiener
models
A KULT AGENCY

LANA ZAICHENKO

FACE

10

PHOTO: FRIEDRICH MUELLER/STUDIO, HAAR: ANNEKE, MAKEUP: ANNEKE/STUDIO

GESCHMEIDIG.
Color Cream Lipstick Berry von
LOOK BY BIPA, € 3,49

HEIGHT 174 CM / 5'8.5" | CHEST 87 CM / 34.5" | WAIST 62 / 24 | HIPS 89 CM / 35" | HAIR BROWN | EYES BLUE
DRESS 36 EU / 6 US / 8 UK | SHOES 38 EU / 7 US / 5 UK

wiener
models
A KULT AGENCY

LANA ZAICHENKO



Kostým Miklosko Fashion Design,
Šperky SKVOST Jewellery,
Top a kabelka Zara

FEBRUAR 2024/25

HEIGHT 174 CM / 5'8.5" | CHEST 87 CM / 34.5" | WAIST 62 / 24 | HIPS 89 CM / 35" | HAIR BROWN | EYES BLUE
DRESS 36 EU / 6 US / 8 UK | SHOES 38 EU / 7 US / 5 UK

wiener
models
A KULT AGENCY

LANA ZAICHENKO

Február 2024 | 1,9

BEAUTY

&WOMAN



Casopis ocenený Zlatou pečaťou
v rokoch 2003, 2005, 2007 a 2022

Otestujte
s nami Klub

**GOLDEN
GLOBES**

GOLDEN AGE
Fero Mikloško

PERINBABA
Juraj Jakubisko

**ŽENY
PO MENOPAUZE**
Čo ich ohrozuje

Ako si
predĺžiť
život

PARTY TIME

www.beautywoman.sk



HEIGHT 174 CM / 5'8.5" | CHEST 87 CM / 34.5" | WAIST 62 / 24 | HIPS 89 CM / 35" | HAIR BROWN | EYES BLUE
DRESS 36 EU/6 US/8 UK | SHOES 38 EU/7 US/5 UK

wiener
models
A KULT AGENCY

LANA ZAICHENKO



HEIGHT 174 CM / 5'8.5" | CHEST 87 CM / 34.5" | WAIST 62 / 24 | HIPS 89 CM / 35" | HAIR BROWN | EYES BLUE
DRESS 36 EU / 6 US / 8 UK | SHOES 38 EU / 7 US / 5 UK

wiener
models
A KULT AGENCY

LANA ZAICHENKO



HEIGHT 174 CM / 5'8.5" | CHEST 87 CM / 34.5" | WAIST 62 / 24 | HIPS 89 CM / 35" | HAIR BROWN | EYES BLUE
DRESS 36 EU / 6 US / 8 UK | SHOES 38 EU / 7 US / 5 UK

wiener
models
A KULT AGENCY

LANA ZAICHENKO



HEIGHT 174 CM / 5'8.5" | CHEST 87 CM / 34.5" | WAIST 62 / 24 | HIPS 89 CM / 35" | HAIR BROWN | EYES BLUE
DRESS 36 EU / 6 US / 8 UK | SHOES 38 EU / 7 US / 5 UK

wiener
models
A KULT AGENCY

LANA ZAICHENKO



HEIGHT 174 CM / 5'8.5" | CHEST 87 CM / 34.5" | WAIST 62 / 24 | HIPS 89 CM / 35" | HAIR BROWN | EYES BLUE
DRESS 36 EU / 6 US / 8 UK | SHOES 38 EU / 7 US / 5 UK

wiener
models
A KULT AGENCY

LANA ZAICHENKO



HEIGHT 174 CM / 5'8.5" | CHEST 87 CM / 34.5" | WAIST 62 / 24 | HIPS 89 CM / 35" | HAIR BROWN | EYES BLUE
DRESS 36 EU / 6 US / 8 UK | SHOES 38 EU / 7 US / 5 UK

wiener
models
A KULT AGENCY

LANA ZAICHENKO



HEIGHT 174 CM / 5'8.5" | CHEST 87 CM / 34.5" | WAIST 62 / 24 | HIPS 89 CM / 35" | HAIR BROWN | EYES BLUE
DRESS 36 EU / 6 US / 8 UK | SHOES 38 EU / 7 US / 5 UK

wiener
models
A KULT AGENCY

LANA ZAICHENKO



HEIGHT 174 CM / 5'8.5" | CHEST 87 CM / 34.5" | WAIST 62 / 24 | HIPS 89 CM / 35" | HAIR BROWN | EYES BLUE
DRESS 36 EU / 6 US / 8 UK | SHOES 38 EU / 7 US / 5 UK

wiener
models
A KULT AGENCY

LANA ZAICHENKO



HEIGHT 174 CM / 5'8.5" | CHEST 87 CM / 34.5" | WAIST 62 / 24 | HIPS 89 CM / 35" | HAIR BROWN | EYES BLUE
DRESS 36 EU / 6 US / 8 UK | SHOES 38 EU / 7 US / 5 UK